



Choose your colour

Three colours of snap-on trunking for a perfect integration in any environment

Main benefits

- 1 catalogue number = trunking + body + dividers
- Perfect separation of high and low currents and large capacity in each compartment
- Ingenious accessories for simple, intuitive installation



■ Black edition snap-on trunking, p. 745



■ White snap-on trunking, p. 747



■ Grey snap-on trunking, p. 750

MORE INFORMATION



www.export.legrand.com



E-catalogue

TRUNKING			TRUNKING			AND ACCESSORIES			ANGLES			JUNCTIONS				ACCESSORIES	
Number of compartments	Cover width	Cross-section (mm)	Monobloc: body + cover ⁽¹⁾	Divider	Fishplate body joint	Stick-on body joint	Cover joint	End cap	Internal angles ⁽²⁾	External angles	Flat angles	Flat junctions with width 80 mm	Flat junctions with width 105 mm	Angled junctions 85/105/130 mm	Junction with floor duct 50 x 12/92 x 20	Extra cover	Adaptor for modular wiring accessories
SNAP-ON TRUNKING - 45 mm cover																	
	45	50 x 80	● 0 757 50	0 756 09	-	0 757 80	0 757 85	0 757 55	0 757 60	0 757 65	0 757 70	0 757 75	-	-	-	0 757 79	-
			○ 0 756 01	0 756 09	0 756 61	0 756 66	0 756 69	0 756 11	0 756 21	0 756 31	0 756 41	0 756 71	-	0 756 81 + 0 756 21	0 756 88	0 756 08	0 310 69
			● 0 758 00	0 756 09	0 758 30	0 758 33	0 758 35	0 758 05	0 758 10	0 758 15	0 758 20	0 758 25	-	-	-	0 758 29	-
	45	50 x 105	0 756 02	0 756 09	0 756 62	0 756 67	0 756 69	0 756 12	0 756 22	0 756 32	0 756 42	0 756 72	0 756 76	0 756 81 + 0 756 22	0 756 88	0 756 08	0 310 69
	45 45	50 x 130	● 0 757 52	-	-	0 757 80	2 x 0 757 85	0 757 57	0 757 62	0 757 67	0 757 72	0 757 75	-	-	-	0 757 79	-
			○ 0 756 03	-	0 756 61	0 756 66	2 x 0 756 69	0 756 13	0 756 23	0 756 33	0 756 43	0 756 71	0 756 75	0 756 81 + 0 756 23	0 756 88	0 756 08	0 310 69
	45 45	50 x 145	● 0 758 02	-	0 758 30	0 758 33	0 758 35	0 758 07	0 758 12	0 758 17	0 758 22	0 758 25	-	-	-	0 758 29	-
	45 45	50 x 180	○ 0 756 04	-	0 756 63	① 0 756 66 + ② 0 756 67	2 x 0 756 69	0 756 14	0 756 24	0 756 34	0 756 44	① 0 756 71 + ② 0 756 72	① 0 756 75 + ② 0 756 76	0 756 81 + 0 756 24	0 756 88	0 756 08	0 310 69
	45 45 45	50 x 180	○ 0 756 06	-	0 756 61	0 756 66	3 x 0 756 69	0 756 16	0 756 26	0 756 36	0 756 46	0 756 71	0 756 75	0 756 81 + 0 756 26	0 756 88	0 756 08	0 310 69
	45 45 45	50 x 180	● 0 758 04	-	0 758 30	0 758 33	0 758 35	0 758 09	0 758 14	0 758 19	0 758 24	0 758 25	-	-	-	0 758 29	-

1: Partition(s) integral to the body
2: Internal and external corner angles supplied with multi-compartment partition joint

Mechanisms for snap-on DLP trunking

Mounting functions

The Soluclip accessory is very easy to install with any Mosaic or Arteor function and offers the following features:

- Anti-slip
- Anti-pullout
- IP 4X
- Perfect cover finish



○ 0 756 90
● 0 757 86
● 0 758 36

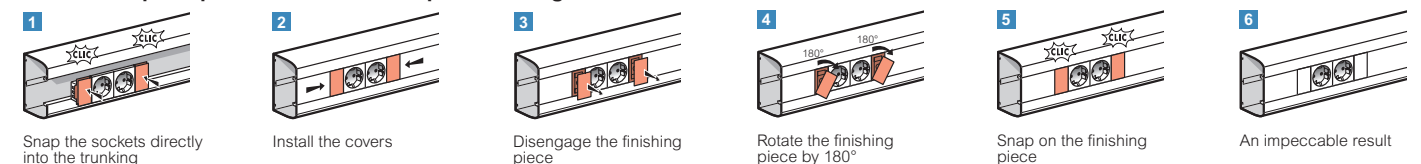
Sockets for snap-on trunking

Sockets for snap-on trunking have been specially designed to meet the requirements for installation and use in total compliance with the new standard EN 50085-2-1. The sockets are fitted with the Soluclip accessory which has the following features:

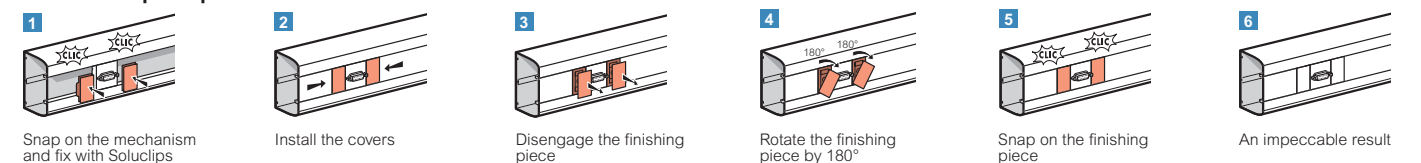
- Anti-slip
- Anti-pullout
- IP 4X
- Perfect finish

		Standard	Tamperproof	Red	Black
2 x 2P+E		0 772 02	0 772 22	0 772 42	0 772 32
3 x 2P+E		0 772 03	0 772 23	0 772 43	0 772 33
Tap-off accessory			0 771 06		-
2 x RJ 45 Cat. 6 - FTP			0 765 46		0 794 85
2 x RJ 45 Cat. 5e - FTP			0 765 42		-
1 x RJ 45 Cat. 6 - UTP		-	-	-	0 794 81
2 x RJ 45 Cat. 6 - STP		-	-	-	0 794 86

Installation principle for sockets for snap-on trunking



Installation principle for Mosaic or Arteor functions



Operating principle for the tap-off accessory

